

2023-2024 in Review

ROOTED FAITHFUL FRUITFUL



CHRISTIAN DIRECTION





ROOTED, FAITHFUL & FRUITFUL



ROOTED, FAITHFUL & FRUITFUL

In nature, we see that fruitfulness comes when something is healthy and growing. It also comes from strong roots. Jesus told his disciples “If you remain in me, you will bear much fruit.” (John 15:5). At Christian Direction all of our work is rooted in the person of Jesus Christ and flows out of Jesus’ care and compassion for others.

Over the last five years as executive director, I have seen how we have been growing through this rootedness in Christ and faithfulness to his mission. By God’s grace, I have seen:

1. A focused sense of identity and calling.
2. Strengthened governance and new stakeholders.
3. Younger workers who are passionate about serving others.
4. Story-telling that inspires other Christians in their faithfulness.
5. Exceptional generosity and stronger financial resiliency.
6. Growing confidence from public partners.
7. Courageous commitment to critical social issues.

I hope that in the following pages you will see and celebrate with us the fruit that is born out of this rootedness, growth, and health. And I hope you will hear the invitation to join us in being rooted, faithful, and fruitful!

TIM KEENER

Executive Director



ROOTED, FAITHFUL, & FRUITFUL

Full Basket	
10 items	\$0.50
15 items	\$1.25
20 items	\$2.50

WHO WE ARE

We are a community of urban practitioners with over 50 years experience partnering with local congregations and social service agencies for the social and spiritual transformation of youth, families and their communities in Quebec.

HOW WE MAKE A DIFFERENCE

ENGAGING LEADERS

We engage leaders from local churches and community organisations who share a common commitment to the well-being of our city and its communities.

BUILDING CAPACITIES

We strengthen the capacities of urban practitioners who desire to integrate their spiritual life into a lived theology that puts their faith into practice.

DEVELOPING INITIATIVES

We foster the development of creative initiatives that result in sustainable change for the wellbeing of neighbourhoods and their residents.

ENGAGING LEADERS

Who share a common commitment to a common good.

ROOTED, FAITHFUL & FRUITFUL

This year we were able to engage directly with **24 local churches** in various initiatives of community outreach.

Over **200 people** participated in an online week of prayer each day for youth, the elderly, housing, and peace for their community in Mercier.

This year we completed an 87- page community exegesis (study) of the West Island as well as a focused exegesis of the Cloverdale neighbourhood, which is home to over **50 nationalities** and home to Canada's largest housing cooperative. These reports were shared with over **30 church and community sector leaders**, including La Corde, a ministry of Youth Unlimited which serves youth and families in Cloverdale.

These resources help leaders map the heart, the hurt, and the hope of communities and equip churches to ask, *"Who are our neighbours?"* And, *"In what ways can we serve them in the name of Jesus?"* Each report is completed in consultation with local residents and includes a complete list of congregations, ministries, and social services in the area.

From the port to the north of Montreal (from Hochelaga-Maisonneuve to Montréal-Nord) we have been engaging church leaders who want to put their

faith into action in concrete ways. We helped the church Alliance Chrétienne Missionnaire Haïtienne to repurpose their presbytery in partnership with a local non-profit to open transitional housing which provides **12 beds in eight apartments** for refugees and asylum seekers. Much of our work in this area of the city is generously supported by partners at Mission Chrétienne Intergénérationnelle, a church committed to making a difference locally and with whom we have been providing training and consultation.

In the downtown Peter-McGill neighbourhood, Evangel Pentecostal Church is home to Innovation Youth and its Connections, Children's Library, and Urban Agriculture programs. Just down the street, St. Jax Anglican Church provides space for Innovation Assistance's Food Solidarity Markets as well as a kitchen for food transformations that are a part of our zero-waste food cycle.

BUILDING CAPACITIES

For a lived theology that puts faith into practice.

ROOTED, FAITHFUL & FRUITFUL



Capacity building begins with our own team which meets twice monthly for prayer and training. This extends to our summer employment program which employed **10 young adults** this summer in roles of urban gardening, food security, community outreach, and more. Each employee receives theological, spiritual and practice training through our Urban Lab.

In addition to employees, we also provide internships for youth. This year interns tended **nine urban gardens**, where they learned to, “see life in the cracks of the city.” Through programs like these, we are helping younger Christians embody their faith and seek the good of the city.

Over **94 kg** of herbs, vegetables and flowers were harvested from our Urban Gardens, from over **120 different crop varieties!**

60% of that harvest was sold at our solidarity food market, the rest was transformed or given to a local shelter.



Connections accompanied **five young adults**, assisting them in over **200 hours** of academic support.

We provided over **50 hours** of personal and professional development workshops, and **90 hours** of community volunteering.

“Connections is the only place I can be myself, the only place I feel comfortable.”

– *Connections Participant*

Capacity building is also a major aspect of our programs like Connections, which helps young adults with individualized learning needs as they plan and achieve their goals. This year a smaller but significant Connections group joined in activities with another similar program from Summit School. The two groups even celebrated the end of the 2023-2024 school year together among friends and family.



ROOTED, FAITHFUL & FRUITFUL

Further east, in Hochelaga-Maisonneuve, as a part of Entr'Ados, we are helping youth 12-17 years old grow in their capacities through 1) the Choco Hochma chocolate-making program during the school year and 2) the Garden Gang in the summer months. **Seven students** participated in Choco Hochma this year and our Garden Gang ran **3 days a week** throughout the summer. These microenterprises provide gardening, cooking, financial management, and interpersonal skills.

“One of our youth has had difficulty communicating his needs, and getting along with others, often resulting in bullying. He was easily unmotivated in his schoolwork. This summer we saw him grow in his ability to get along, his motivation to learn new things, and even helping the animators and welcoming new participants.”

- Anais, Entr'Ados Animator

DEVELOPING INITIATIVES

That result in sustainable change for neighbourhoods and their residents.

We believe that following Jesus should truly make a difference, not just for us, but for the wellbeing of neighbourhoods and their residents.

Did you know that between 2022-2023, the number of people living in downtown Montreal rose by 14% largely due to immigration? This has created challenges and opportunities for housing, food security, and social inclusion in the Peter-McGill neighbourhood.

23 students attended French speaking workshops twice a week at the Children's Library and **30 students** attended weekly violin classes.

15 families followed a physical development activities program for toddlers with parents.

“We have workshops for parents and children who are often learning French as a third or a fourth language. They cook together, read together, and play together. We rejoice every time a child exclaims, “I can understand new French words!”

- Mai, Children's Library coordinator

Throughout the school year, our Children's Library at Innovation Youth welcomes parents and their children to French social-immersion programs. Participants grow in their language skills as well as building relationships with others who are also new to the area.

In addition to its regular solidarity **food markets twice a month**, Innovation Assistance sets up mobile markets in the lobbies of two low-income seniors residences in their neighbourhood. These mobile markets remove the economic and physical barriers between older residents and the food they need.

“At each of our solidarity food markets, the team of Innovation Youth – Connections students, garden interns, and the library team – comes together for a common goal of serving the residents of Peter-McGill. It’s a beautiful picture of a community working together.”

– *Micah, Innovation Assistance Coordinator*

Innovation Youth is presently serving over **200 households** and engages an average of **30 volunteers** who give hundreds of volunteer hours each month.





Change often means courageously confronting difficult issues. Rapha, a project concerning domestic violence and the church, has been working to make a holy interruption to domestic violence through equipping the church to respond to and support survivors of intimate partner violence. After two years of intensive research we have held **seven focus groups** with **39 church leaders** to better discover gaps and barriers that can be addressed in the church.

Rapha has gathered over **30 specialized volunteers** including nurses, social workers, psychotherapists, pastors and directors of women's shelters.

We have presented over **40 presentations**, sermons, and webinars to over **1500 Christians** in Quebec.

RESOURCING MINISTRY

We see the Gospel in concrete terms—getting help with your learning needs; feeling confident in speaking French; feeling included when you are older and lonely; not worrying about having enough food; experiencing healing after an abusive relationship. These are all real expressions of the Good News and fruit of the Gospel and faith in action!

A LEGACY OF GENEROSITY

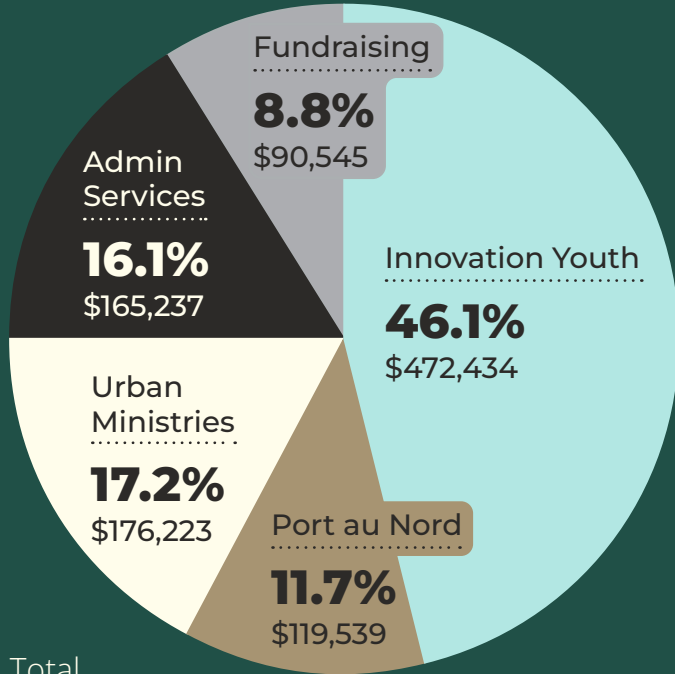
We are grateful for the remarkable generosity and longevity of our donors, including many who have been giving since our beginning in the late 1960s and early 1970s. Some of our donors are now in their 80s and 90s! In the last three years, we have also received three bequests from faithful and legacy-minded donors as a final contribution to our work.

We are also grateful to small businesses and local churches who sponsor specific programs or give annually to make our work possible. We are paying attention to trends in our donations as well as in the broader charitable sector. Here are some important trends that will continue to impact our work in the near future.

- Older donors are passing the baton, presenting an opportunity to engage a younger generation in our ministry.
- We are building credibility with public partners who have a shared interest in community impact.
- There is a growing multi-ethnic church, with Christians newer to Canada who are ready to engage in community impact.
- We are connecting with more and more Christians who care about giving to concrete expressions of the Gospel that have social impacts.

2024-2025

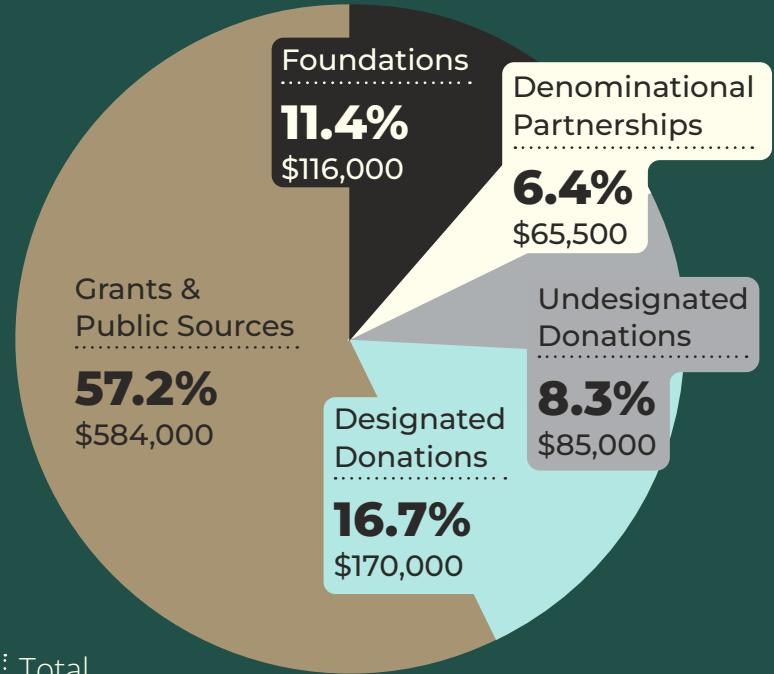
BUDGETED MINISTRY



Total
\$1,023,978

2024-2025

PROJECTED REVENUES



Total
\$1,020,500

FINANCIAL PARTNERS

Arboplus
Christian Reformed Church of North America
Diaconal Ministries Canada
Direction régionale de la santé publique
Église MCI
Help Age Canada
Jeunesse sans limite Montréal
Resonate Global Mission
Second Harvest
Service Canada
Street Psalms
The Charis Foundation
The Falle Foundation
The Daccord Foundation
The Cheng Foundation
The Heron Family Foundation
United Way/Centraide
Ville de Montréal
West Island Network

THANK YOU!

Our entire Christian Direction team wishes to thank our valued Board and Corporation members and many financial partners. Thank you for making our work possible!

CANADIAN BOARD OF DIRECTORS

Kevin Abarbanel
Marjorie Bergen
Julie Bérubé
Jeremy Favreau
Rosemary Lambie
David Manafo
Valery Nabi

C-4824 Côte-des-Neiges Road,
Montréal, QC, H3V 1G4

514 878-3035
direction.ca